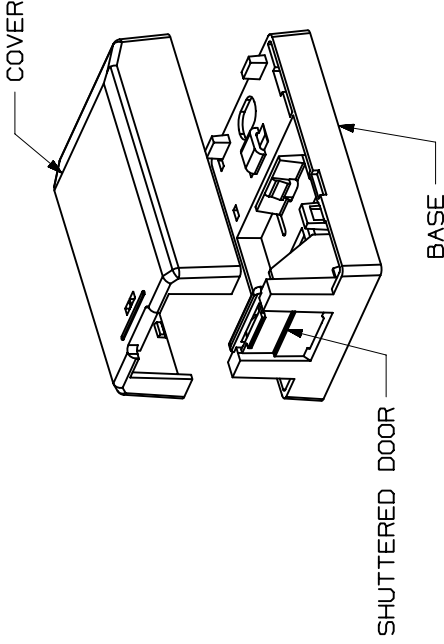
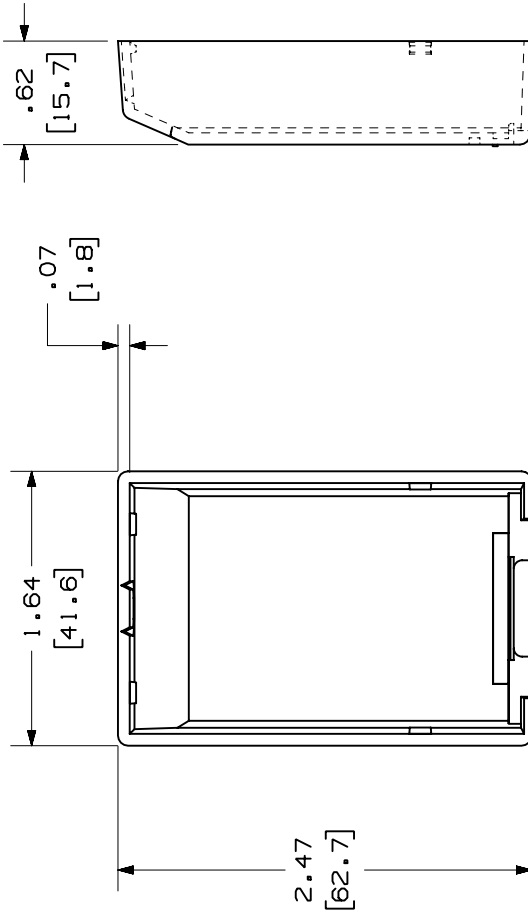
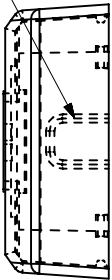


THIS COPY IS PROVIDED ON A RESTRICTED BASIS AND IS NOT TO BE USED IN ANY WAY DETRIMENTAL TO THE INTERESTS OF PANDUIT CORP.

BREAKOUT AREA



CAD FILENAME/LAYERS

M00800AD_DC_01A.PRT

PANDUIT

CORP. TINLEY PARK, ILLINOIS

MINI-COM 1 POSITION
SHUTTERED BOX (CBXS1**)
CUSTOMER DRAWING

UNLESS OTHERWISE SPECIFIED,
DIMENSIONAL TOLERANCES ARE:
(.X) ±.010 (.3)
(.XX) ±.031 (.8) ANGLES ±

UNLESS OTHERWISE SPECIFIED,
ALL DIMENSIONS ARE GIVEN
IN INCHES, THIRD ANGLE PROJECTION.

DRAWN BY	JSP	MAT'L	NONE
DATE	3-15-01	DRAWING NO.	00800-21
CHECKED BY		SCALE	SHEET 2 OF 2

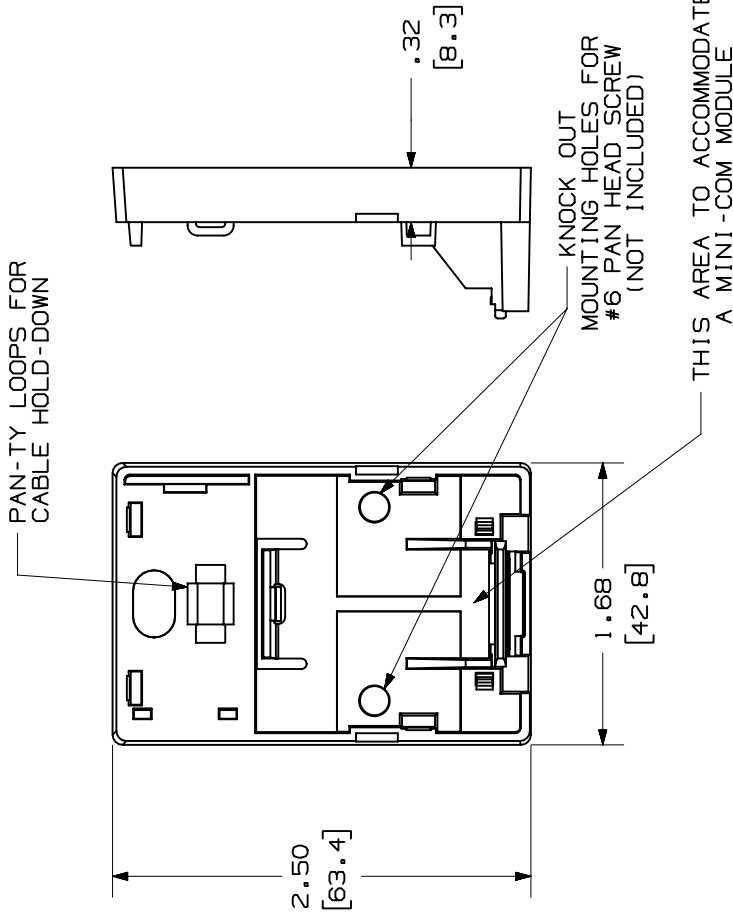
ECN	00800-21	DWG	A
CHK		SIZE	

REV	DATE	BY	CHK	DESCRIPTION	ECN	CHK	CUST	SUP
R	3-15-01	JSP		SEE SHEET 1 OF 2	00800-21			

THIS COPY IS PROVIDED ON A RESTRICTED BASIS AND IS NOT TO BE USED IN ANY WAY DETRIMENTAL TO THE INTERESTS OF PANDUIT CORP.

PANDUIT P/N	WEIGHT
CBXS1**-A	.40 LB/10 PCS (181.9 g/10 PCS)

- NOTES:
- SEE CURRENT CATALOG FOR ADDITIONAL PART NUMBER SUFFIXES TO INDICATE COLOR AND OR PACKAGE QUANTITY. SEE CATALOG FOR A COMPLETE LIST OF PARTS APPLICABLE FOR USE WITH THIS PART.
 - DIMENSIONS IN PARENTHESES ARE IN METRIC.
 - ALSO INCLUDED WITH BOX:
 - PLTIM-M PAN-TY
 - STRIP OF 1.00" X .75" FOAM TAPE FOR MOUNTING
 - BASE HAS 1 POCKET FOR OPTIONAL MAGNET (CSBM-X)
 - BREAKOUTS DESIGNED TO ACCEPT LD5/LDP5 RACEWAY. (DOES NOT ENTER BOX.)



CAD FILENAME/LAYERS

MO0800AD_DC_01A.PRT

PANDUIT

CORP. TINLEY PARK, ILLINOIS

MINI-COM 1 POSITION
SHUTTERED BOX (CBXS1**-A)
CUSTOMER DRAWING

UNLESS OTHERWISE SPECIFIED,
DIMENSIONAL TOLERANCES ARE:
(.X) ± .010(.3)
(.XXX) ±.010(.3)
(.XX) ±.03(.8) ANGLES ±

UNLESS OTHERWISE SPECIFIED,
ALL DIMENSIONS ARE GIVEN
IN INCHES, THIRD ANGLE PROJECTION.

DRWN BY	JSP	MAT'L	NONE	SCALE	NONE
DATE	3-15-01	BOX: ABS	DOORS: HIPS	DRAWING NO.	00800-21
CHECKED BY					SHEET 1 OF 2
REV	DATE	BY	CHK	ECN	CHK
R	3-15-01	JSP		00800-21	
				RELEASED TO PRODUCTION.	
				DESCRIPTION	